

Z-W50 B & R RECHARGEABLE LED BEACON

High performance flash warning beacon for emergency usage.
Magnetic free cable solution installed on diverse vehicles.
With remote controller for flexible operation.
Customized LOGO design acceptable.



PRODUCT INFORMATION

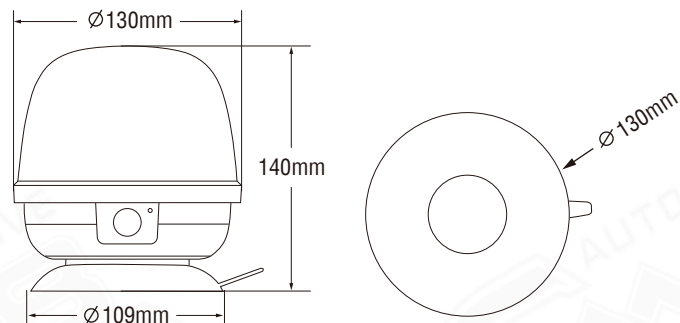
Product Code	Power Consumption	Current / Voltage	SMD	LED Q'TY	Color temperature	Compliance	LED color
Z-W50B	14.7W	0.61A @ 24V	3030	20	590-595nm	R67 R10	●
Z-W50R	14.7W	0.61A @ 24V	3030	20	590-595nm	R67 R10	●

CHARGING PARAMETERS

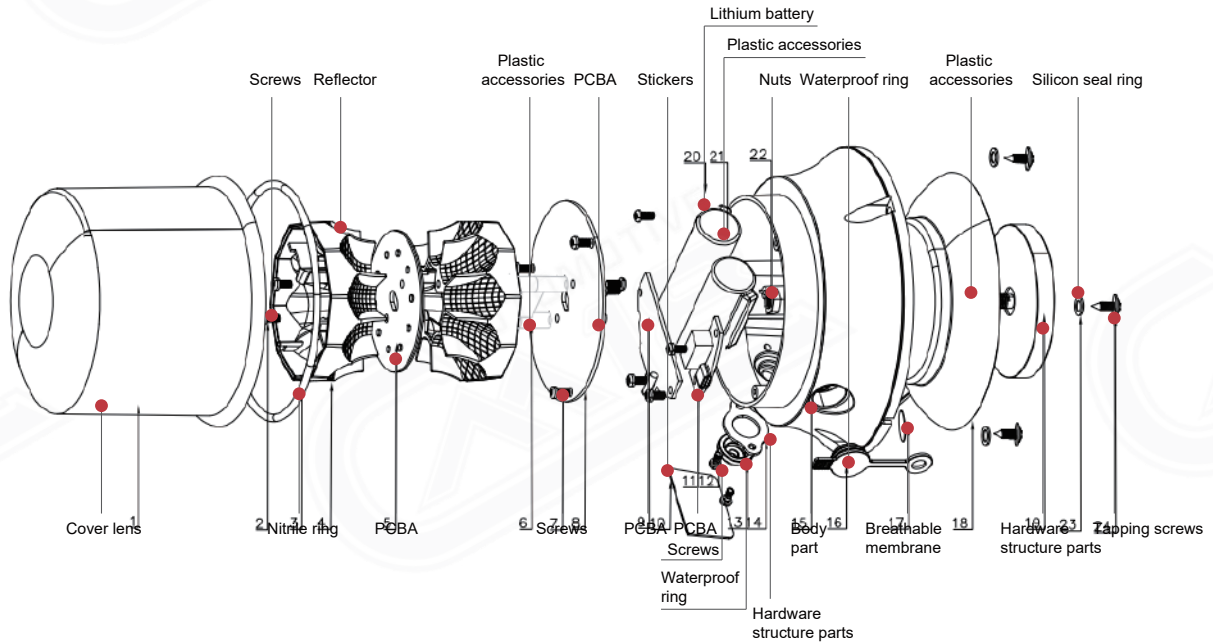
Overcharge, over discharge, over temperature protection

Charging interface	Electric core	Capacity	Charging voltage	Charging current	Charging time	Discharging time
TYPE-C	Double section 18650 lithium ion	7.4V 2600mAh	IN DC 5V	2100mA	±3h	±6.5h when in flash modes

State	Electric quantity	Indicator light
Charging status	0-30%	Red light
	30-99%	Yellow light
	100%	Green light
	70-100%	Green light
Discharge	30-70%	Yellow light
	10-30%	Red light
	10% below	Red flash lights



THE EXPLOSION FIGURE



7 MODES



4 modes flash

- ① Single flash
- ② Double flash
- ③ Triple flash
- ④ Quintet flash

3 modes rotation

- ① Triple flash & Clockwise rotation
- ② Clockwise rotation
- ③ Anticlockwise rotation
- ④ 1 mode Cruise

INSTALLATION



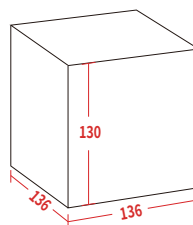
Applications



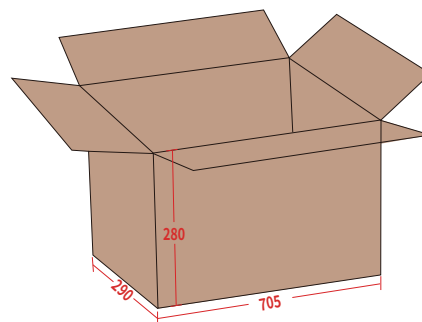
PRODUCT PACKAGING

Z-W50B&R

- White box Size: 136*136*130mm
- Master Carton Size: 705*290*280mm
- Net Weight of Each Lamp: 0.445 KG
- Gross Weight per Carton: 11.9 KG
- Quantity of Each Carton: 20 pcs



White box



Outer box